

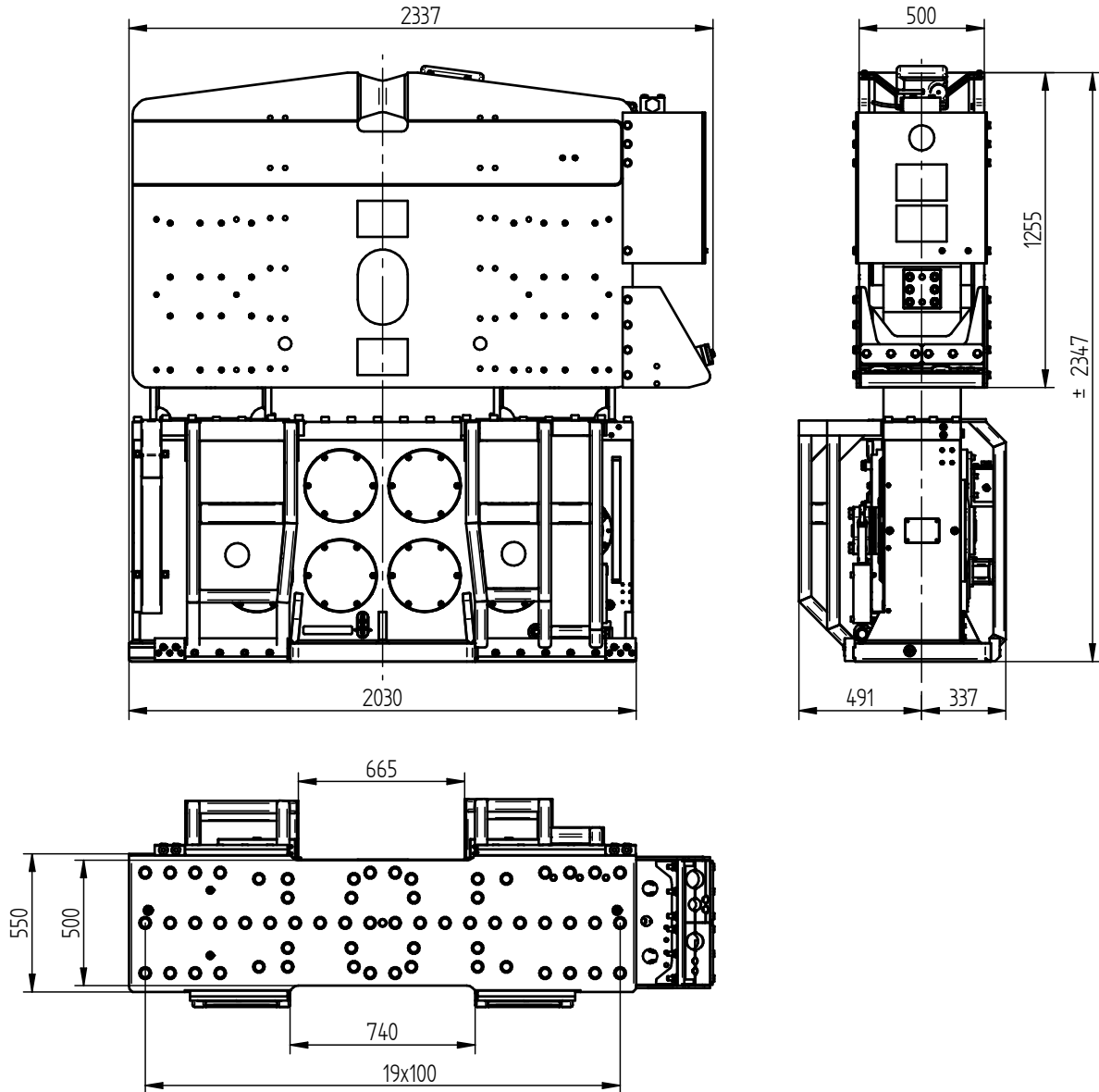


Specification sheet

PVE 35VM

Vibro Hammer

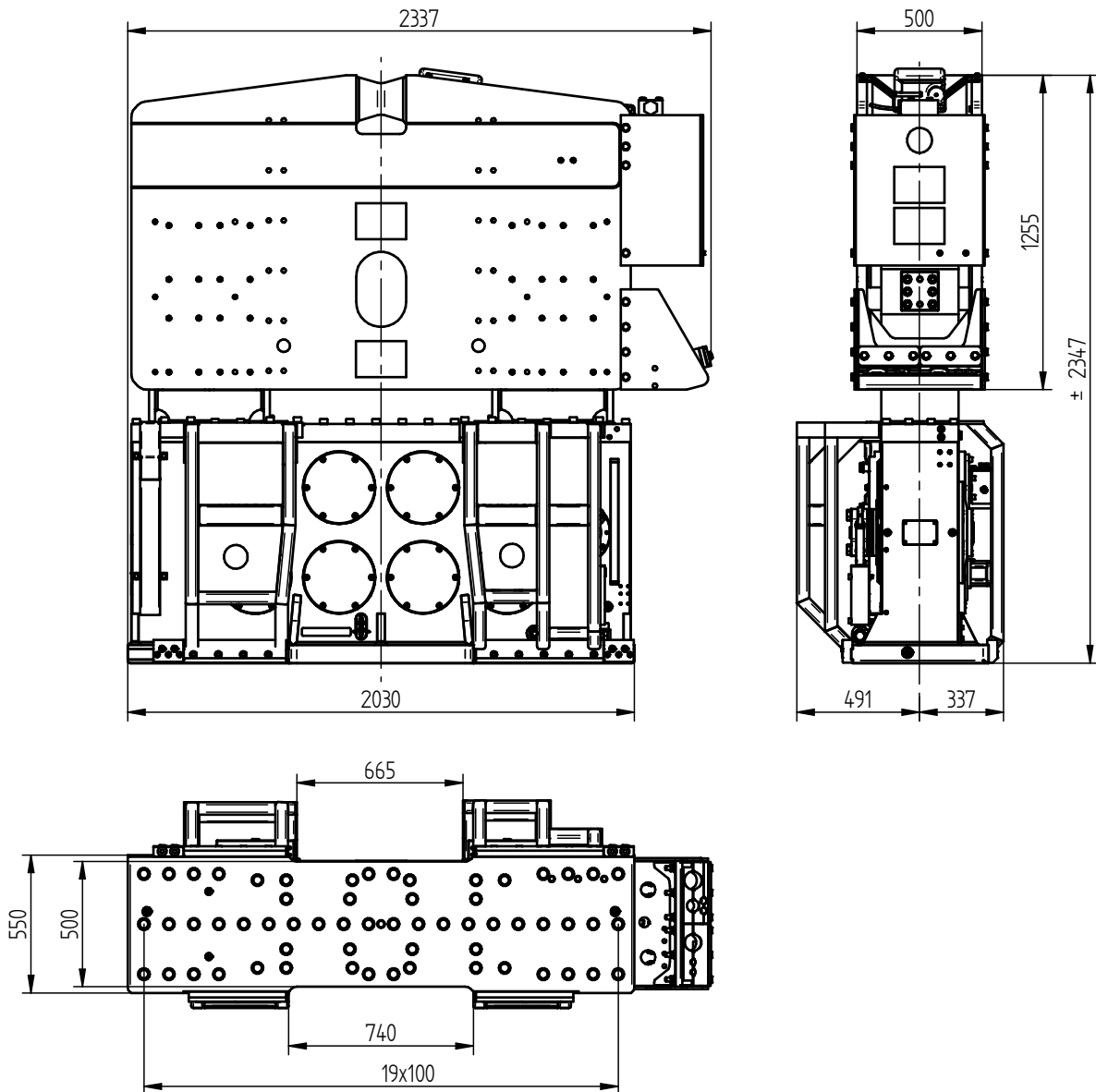
English



Specifications :

PVE 35VM

Eccentric moment	0-35 kgm	Clamps:	
Centrifugal force	0-2030 kN	Sheet pile clamp	350TU
Max. frequency	2300 rpm	Transport weight per piece	2600 kg
Max. amplitude excl. 350TU	16 mm	Double clamps	150TC
Max. amplitude incl. 350TU	10,1 mm	Transport weight per piece	1300 kg
Max. static line-pull	500 kN		
Max. pull-down	300 kN		
Max. operating pressure	350 bar	Powerpack:	
Max. oil flow	1012 l/min	Model	1000 series
Max. hydraulic power	590/802 kW/HP		
Forced lubrication	yes		
Dynamic weight excl. 350TU	4400 kg	Hose set:	
Dynamic weight incl. 350TU	7000 kg	Length	45 m
Total weight excl. 350TU & hoses	6850 kg	Transport weight (±)	1540 kg



Technische Daten :

PVE 35VM

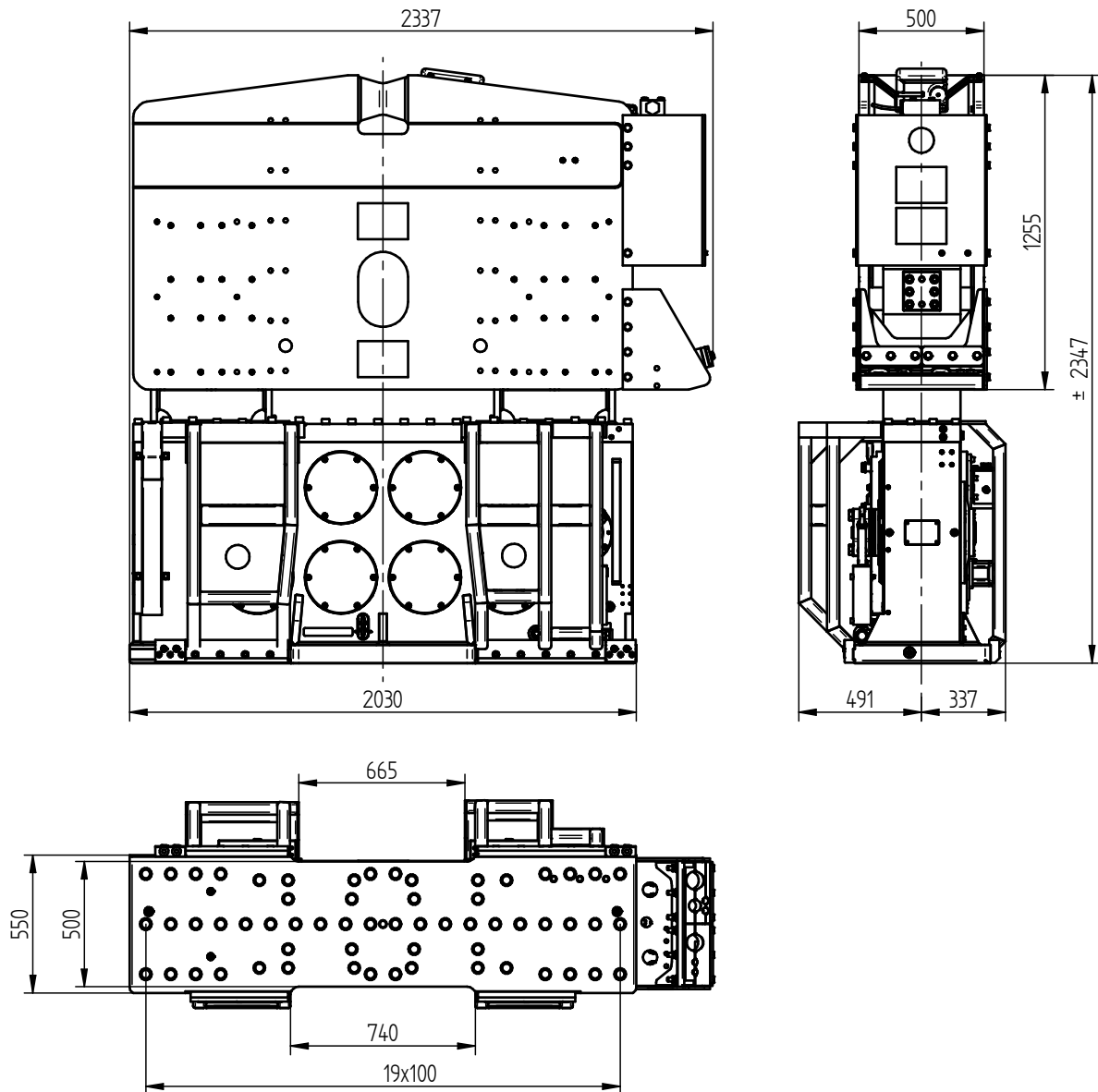
Statisches Moment	0-35 kgm	Klemmzange:	
Max. Fliehkraft	0-2030 kN	Universalzange	350TU
Max. Drehzahl	2300 rpm	Transportgew. pro Stück	2600 kg
Max. Amplitude ohne 350TU	16 mm	Rohrklemmzange	150TC
Max. Amplitude mit 350TU	10,1 mm	Transportgew. pro Stück	1300 kg
Max. Statische Zugkraft	500 kN		
Max. Vorspannung	300 kN		
Max. Betriebsdruck	350 bar	Aggregat:	
Max. Fördermenge	1012 l/min	Modell	1000 series
Max. hydraulische Leistung	590/802 kW/PS		
Zwangsschmierung	ja		
Dyn. Gewicht ohne 350TU	4400 kg	Schlauchsatz:	
Dyn. Gewicht mit 350TU	7000 kg	Länge	45 m
Gesamtgew. Ohne 350TU & Schläuche	6850 kg	Transportgewicht (±)	1540 kg



Spécifications

PVE 35VM

Vibro Hammer



Spécifications		PVE 35VM	
Moment excentrique	0-35 kgm	Pinces:	
Max. force centrifuge	0-2030 kN	Pince palplanche	350TU
Max. fréquence	2300 rpm	Poids de transport par pièce	2600 kg
Max. amplitude sans 350TU	16 mm	Pince tube	150TC
Max. amplitude avec 350TU	10,1 mm	Poids de transport par pièce	1300 kg
Force de traction statique	500 kN		
Force maximale d'appui	300 kN		
Pression de travail max.	350 bar	Groupe hydraulique:	
Débit d'huile max.	1012 l/min	Modèle	1000 series
Puissance hydraulique max.	590/802 kW/ch		
Huile lubrifiante	oui		
Poids dynamique sans 350TU	4400 kg	Jeu de tuyau:	
Poids dynamique avec 350TU	7000 kg	Longueur	45 m
Poids total sans 350TU & tuyaux	6850 kg	Poids de transport (±)	1540 kg

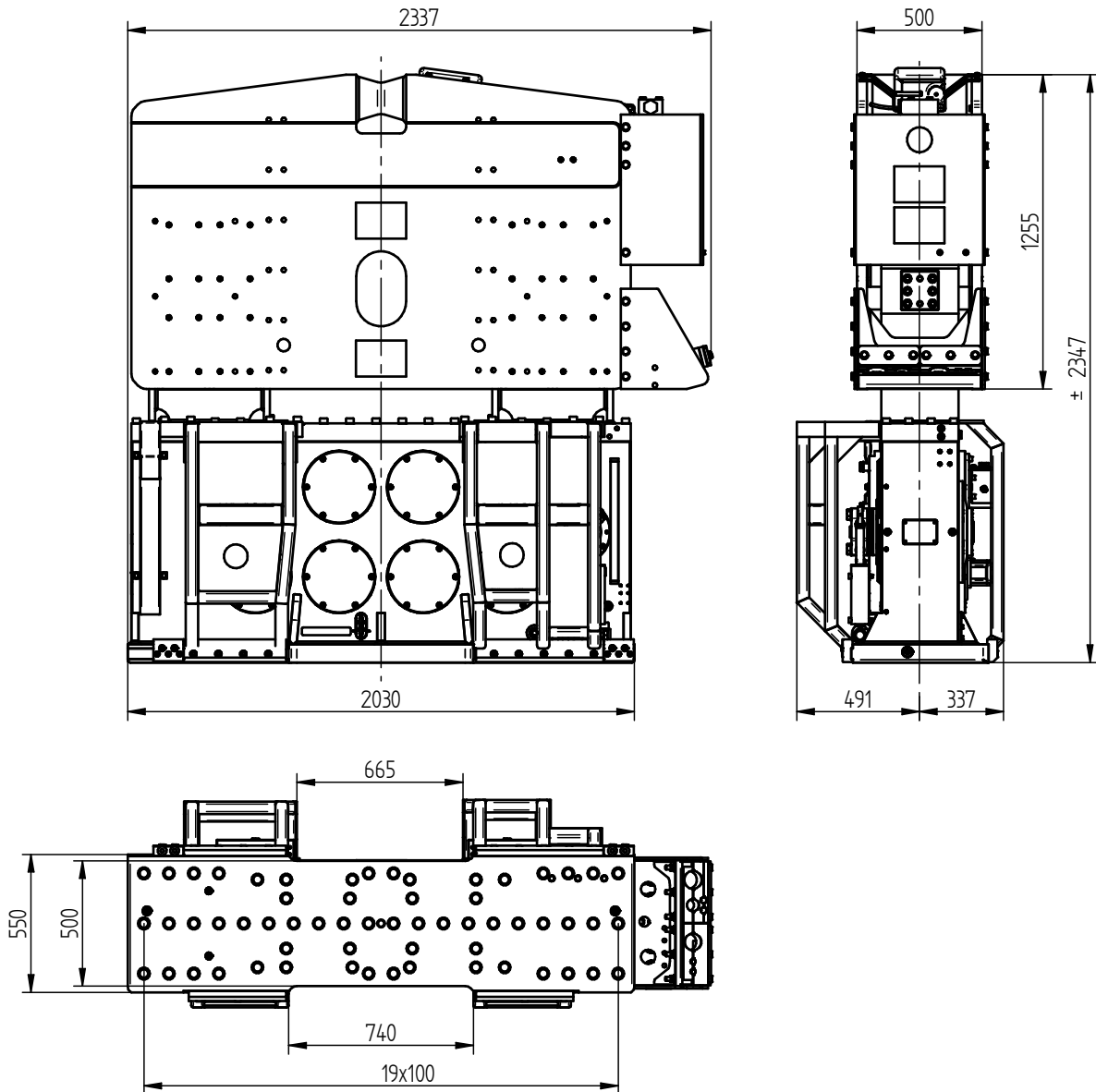


Specificaties

PVE 35VM

Vibro Hammer

Nederlands



Specificaties		PVE 35VM	
Excentrisch moment	0-35 kgm	Klemmen:	
Max. centrifugaalkracht	0-2030 kN	Damwandklem	350TU
Max. toerental	2300 rpm	Transportgewicht per klem	2600 kg
Max. amplitude excl. 350TU	16 mm	Pijpenklem	150TC
Max. amplitude incl. 350TU	10,1 mm	Transportgewicht per klem	1300 kg
Max. statische trekkracht	500 kN		
Max. voorspanning	300 kN		
Max. werkdruk	350 bar	Aggregaat:	
Max. oliedoorstroming	1012 l/min	Model	1000 series
Max. hydraulisch vermogen	590/802 kW/PK		
Geforceerde smering	ja		
Dynamisch gewicht excl. 350TU	4400 kg	Slangenset:	
Dynamisch gewicht incl. 350TU	7000 kg	Lengte	45 m
Totaalgewicht excl. 350TU & slangen	6850 kg	Transportgewicht (±)	1540 kg

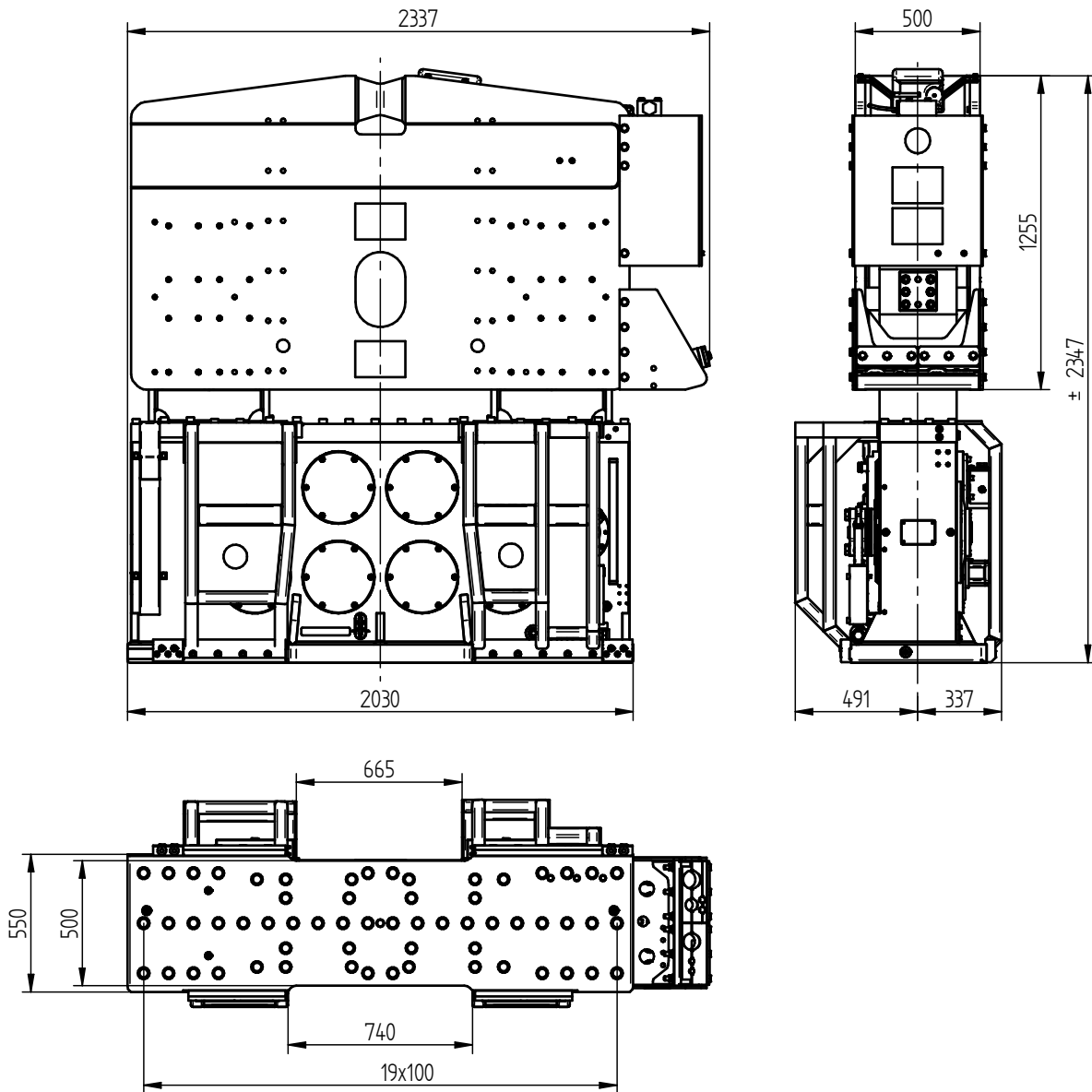


Especificaciones

PVE 35VM

Vibro Hammer

Español



Especificaciones

PVE 35VM

Momento excéntrico	0-35 kgm	Abrazadera:	
Fuerza centrífuga máxima	0-2030 kN	Hoja abrazadera pila	350TU
Frecuencia máxima	2300 rpm	Peso de transporte por pieza	2600 kg
Amplitud máxima excluyendo 350TU	16 mm	Abrazadera de tubo	150TC
Amplitud máxima incluyendo 350TU	10,1 mm	Peso de transporte por pieza	1300 kg
Estático tracción máxima	500 kN		
Compresión máxima	300 kN		
Presión máxima de trabajo	350 bar	Unidad de potencia:	
Flujo de aceite máximo	1012 l/min	Modelo	1000 series
Máxima potencia hidráulica	590/802 kW/HP		
Lubricación forzada	si		
Peso dinámico excluyendo 350TU	4400 kg	Conjunto de manguera:	
Peso dinámico incluyendo 350TU	7000 kg	Longitud	45 m
Peso total excluyendo 350TU & mangueras	6850 kg	Peso de transporte (±)	1540 kg

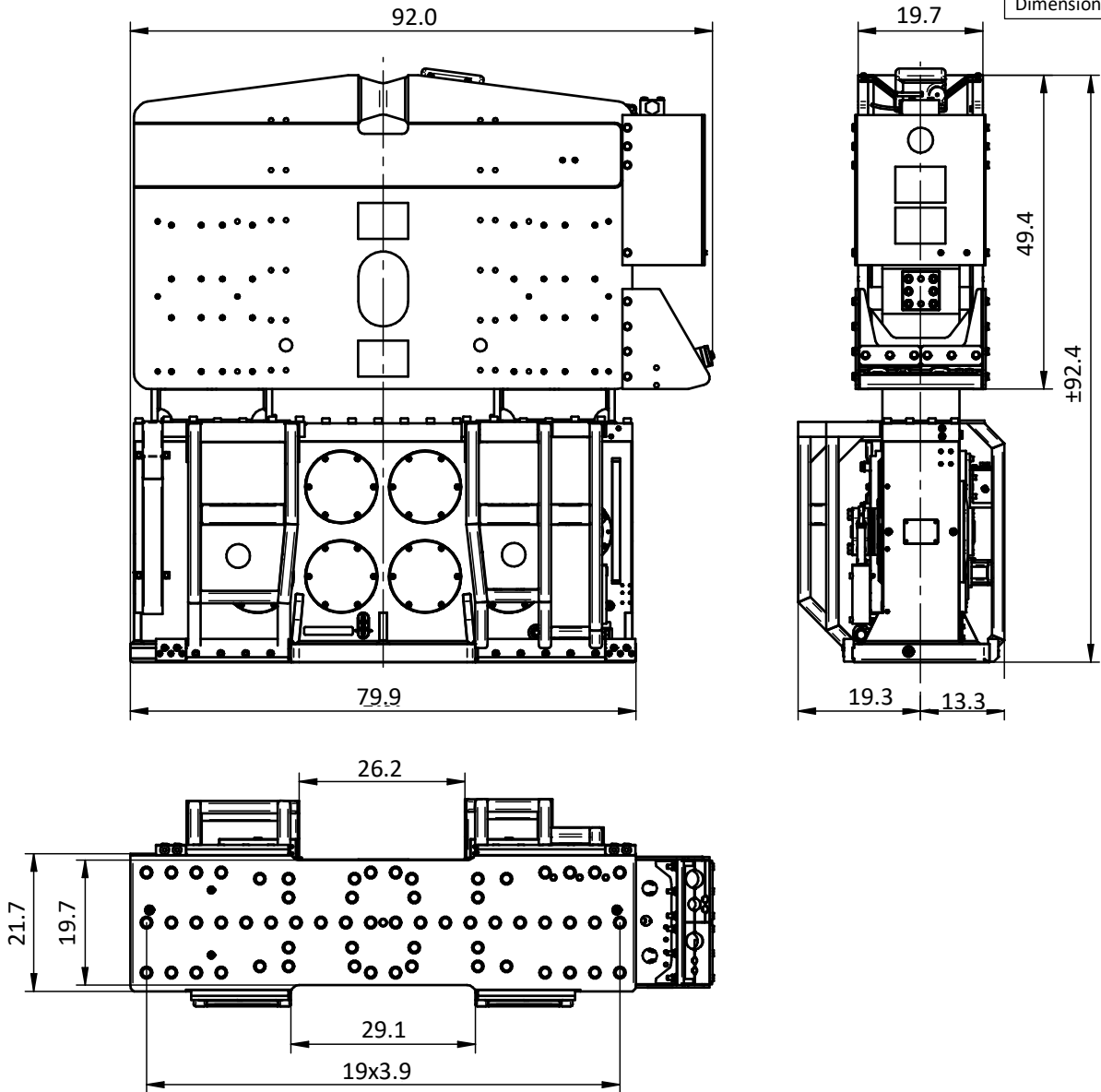


Specifications

PVE 35VM

Vibro Hammer

USA



Specifications		PVE 35VM	
Eccentric moment	0-3,038 in-lbs	Clamps:	
Centrifugal force	0-228 ton	Sheet pile clamp	350TU
Max. frequency	2,300 rpm	Transport weight per piece	5,732 lbs
Max. amplitude excluding 350TU	0.63 in	Double clamps	150TC
Max. amplitude including 350TU	0.4 in	Transport weight per piece	2,866 lbs
Max. static line-pull	56 ton		
Max. pull-down	34 ton		
Max. operating pressure	5,076 psi	Powerpack:	
Max. oil flow	267 gal/min	Model	1000 series
Max. hydraulic power	590/802 kW/HP		
Forced lubrication	yes		
Dynamic weight excluding 350TU	9,700 lbs	Hose set:	
Dynamic weight including 350TU	15,432 lbs	Length	148 ft
Total weight excluding 350TU & hoses	15,102 lbs	Transport weight (±)	3,395 lbs

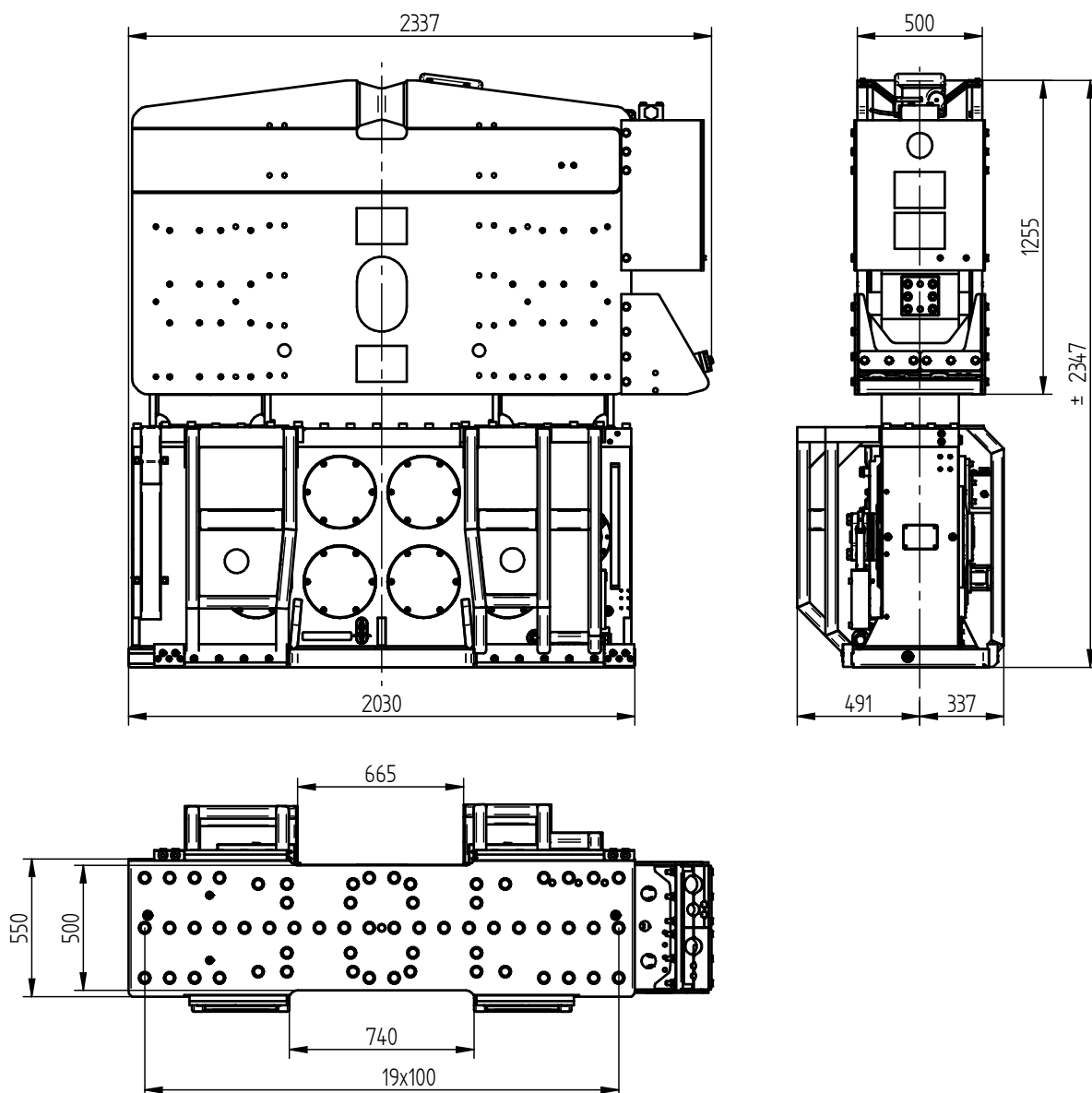


Specificatii

PVE 35VM

Ciocan cu vibratii

românesc



Specificatii :

PVE 35VM

Moment excentric	0-35 kgm	menghira:	
Forța centrifugă maximă	0-2030 kN	menghina pentru palplânse	350TU
Frecvența maximă	2300 rpm	Greutatea de transport pp.	2600 kg
Amplitudine maximă exclusivă. 350TU	16 mm	menghina dublă	150TC
Amplitudine maximă inclusivă. 350TU	10,1 mm	Greutatea de transport pp.	1300 kg
Tracțiune maximă statică	500 kN		
Trage în jos maximă	300 kN		
Presiune maximă de lucru	350 bar	generatoare:	
Debit maxim de ulei	1012 l/min	Model	1000 series
Puterea hidraulică maximă	590/802 kW/HP		
Lubrifiere forțată	da		
Greutatea dinamică exclusivă. 350TU	4400 kg	Tip de furtun:	
Greutatea dinamică inclusivă. 350TU	7000 kg	Lungimea	45 m
Greutatea totală fără. 350TU și funtun	6850 kg	Greutatea de transport (±)	1540 kg